

**KINKI STUDIO**

**EX-P27 PREAMPLIFIER  
INSTRUCTIONS**

- We are from China -

# KINKI STUDIO

## IMPORTED NOTE

The design goal of the analog volume control was to accurately reproduce low noise, low distortion, detailed and uncolored sound. The relay-controlled attenuator, *can* provide just that.

The design principle of the relay-controlled attenuator uses multiple relays and resistors to attenuate the volume. The switching of the relays, at certain steps, may produce a low audible pop/click sound. It is completely normal and does not harm the amplifier and loudspeakers.

KINKI STUDIO EX-P27 uses the highly acclaimed precision multistep relay-controlled attenuator. Combined with the long endurance, precision hand-matched resistors, we achieved the design goal to reproduce highest transparency sound quality.

Congratulations on your purchase!

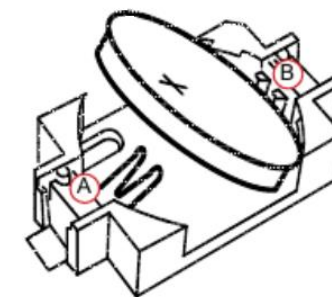
Before you begin, you would need to have a CR2032 battery for the remote control.

Due to restriction of shipping the lithium ion battery via courier services, we have decided to exclude the battery in the package. It should be easily available in the local hardware shop.

Insert the battery as the picture on the left. Please take note of the contact pin (A) & (B). Contact pin (B) has to be resting on top of the battery.



In order to save on packaging materials to reduce environmental impact, cheapo power cord is excluded.



- Enjoy the music -

**THANK YOU!**

# PREFACE 前言

Thank you for purchasing the KINKI STUDIO EX-P27 Pre-Amplifier.

Please take some time to read this manual. It can provide you with useful information to enjoy more fun while listening music with the KINKI STUDIO EX-P27.

## **Introduction**

Founded in 2008, KINKI STUDIO is dedicated to the design and manufacture of high-quality audio equipment. The core design philosophy is to reproduce the sound to its original recording intent and avoid distortion caused by excessive rendering. In order to obtain the best results, KINKI STUDIO insists on using the advanced technology in the audio industry, continuous improvement and refinement over the years, created KINKI STUDIO today.

The high standards and concepts to reproduce sound that have been pursued in the design and manufacturing process, technology and quality have become the core values of KINKI STUDIO.

# WARNING 警告

These instructions must be read before starting the connection or operation, otherwise the amplifier may be risk to mis-operational damage.

Please read and understand the operation and application in detail below.

This is a very high quality amplifier, features with new technology. It is the industry leading audio system for reproducing accurate sound. Only careful installation and correct operation can provide you with the satisfaction you expected. The installation instructions and precautions must be strictly followed to achieve the desired results without affecting the performance of the amplifier.

# CONTENT 目录

01	Unpacking-----	1
02	Placement & Cold Start-----	2
03	Operational Voltage-----	2
04	Connections-----	3
05	Control-----	4-6
06	Optimization-----	7
07	Remote Control-----	8
08	Product Care-----	9
09	Technical Parameters-----	10
10	Block Diagram-----	11-12

## 1. Unpacking

KINKI STUDIO EX-P27 comes with :

- Preamplifier
- Remote Control
- Instruction Manual
- El cheapo Power Cord Excluded (Please use your own audiophile power cord for best sound)

### **Note:**

If the preamplifier needs to be returned to the factory for servicing/warranty or secondary transportation, please use the original packaging. The packaging is specially designed and manufactured by KINKI STUDIO, which can better protect the amplifier during transportation, so please keep the original after unpacking the package.

## 2. Placement & Cold Start

KINKI STUDIO EX-P27 preamplifier, like all high-quality amplifiers, generates a certain amount of heat and must be properly dissipated. To ensure good heat dissipation and cooling, do not place temperature sensitive equipment on top of the amplifier.

## 3. Operational Voltage

The normal working voltage of the EX-P27 is AC 100-120V for AC110 option, and AC 200V~245V for AC230 option. If your normal operating voltage is outside the above range, please consult us.

The EX-P27 is protected by a fuse located at the IEC inlet, rated at 2A slow blow fuse.



## 4. Connections

Connect the power cord to the IEC inlet of the amplifier and plug it into the power plug socket. For safety reasons, a 3-wire grounding (earth) plug must be used, whenever possible. In order to get the best sound from the amplifier, avoid using any multiple plugs socket or extension cords.

The signal input connections are located at the center of the rear panel with indication of “LEFT IN” and “RIGHT IN” respectively.

You may use either RCA or XLR connection to source devices. The XLR Pinout is as follow:

- Pin 1 (Shield)
- Pin 2 (Hot)
- Pin 3 (Cold)

**Note:** The same set of inputs pair should be connected. For example, LEFT IN uses CH1, and RIGHT IN must also use CH1.

## 5. Control

### Power Up

The power inlet IEC of the EX-P27 is located at the rear panel. After the power is supplied to the amplifier, it will be in *Operational* state.

Press the front panel power button underneath once. The display indicator light flashes signify a *Start Up* sequence. The input signal source (CH1-4) and volume display appear once the amplifier is started in *Operational* state.

Under normal working conditions, press and hold the power button underneath the front panel for five seconds, then release it, the amplifier will go into *Standby*. The indicator in the lower right corner lights up.

### Volume adjustment

Rotate the front panel right knob (VOLUME) to adjust the volume, to reduce volume, turn left; to increase volume, turn right. Each step is in logarithm increment, there are total 95 steps.

## 5. Control – Con't

### Mute

Under normal working conditions, press the MUTE button on the remote control once, the display will show MUTE, the input source number and volume display will disappear, the amplifier will be in the *Mute* state. To un-mute, press the MUTE button again to return the amplifier to the *Operational* state.

### Input Source Selection

By turning the left knob (SELECT) to switch between Input CH1, CH2, CH3, CH4.

### Output Source Selection (Mode)

By pressing the MODE button on remote control or press the front panel power button underneath once to switch between Output 1 (RCA Output) , Output 2 (XLR Output) , Output 1+ 2 (RCA and XLR Output operate simultaneously ).

### Display

By pressing the DISPLAY button to brighten / dim / Off the display screen.

## 5. Control – Con't

### HT Bypass Input

HT Bypass Input is located at left rear panel. This feature enable users connecting an external preamplifier to a same power amplifier such as AV preamplifier. This feature can be enabled by using remote control. When it is in HT BYPASS mode, the EX-P27 preamplifier 's volume/gain controls are bypassed, signal from the connected preamp at HT BYPASS terminal passthrough the EX-P27 directly to the amplifier.

## 6. Optimization

### Placement platform

The EX-P27 has extraordinary dynamic capabilities and sound transparency. To fully unleash its performance, it must be placed on a rigid platform or proper HiFi rack. Please avoid the use of any soft materials such as carpets underneath the amplifier.

### Warm Up

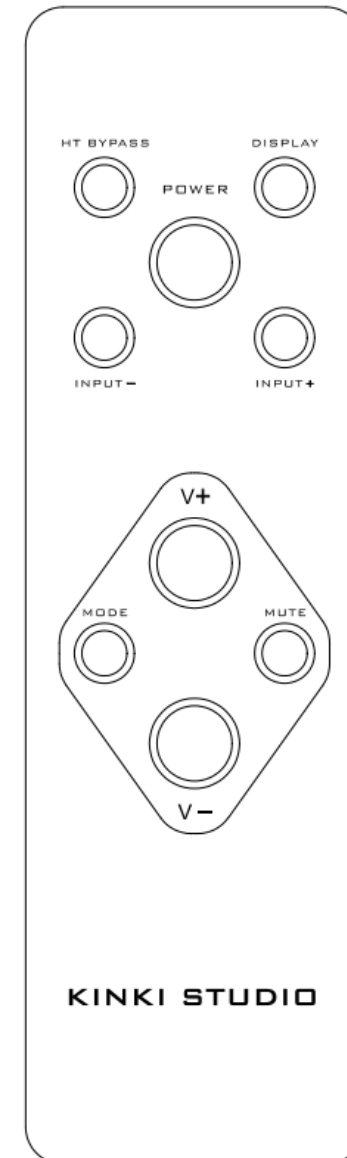
When the preamplifier has not been used for a while, it will take 20 to 45 minutes to "warm-up". In order to achieve the best operating temperature, the circuit must be warmed up to approximately 40 degrees Celsius. It is advisable to keep the supply power on all the time for optimal performance.

**Note:** The EX-P27 preamplifier takes about 300 hours to burn in. Please don't worry, the sound will and can only be improved as it burns in.

## 7. Remote Control

The EX-P27 comes with full function remote control.

- **POWER:** On/Off EX-P27
- **HT BYPASS:** Enable HT Bypass Mode
- **DISPLAY:** Off/Dim/Brighten the Display
- **INPUT + INPUT -:** Input Source Selection
- **V+ V- :** Volume Control
- **MUTE:** Mute Speaker Output
- **MODE:** Output Mode Selection
  - Output 1 : RCA Output
  - Output 2 : XLR Output
  - Output 1 +2 : RCA and XLR Output Operate Simultaneously



## 8. Product Care

The EX-P27 usually requires no maintenance and requires only occasional cleaning of the physical surface.

The power must be turned off and removed before cleaning the amplifier. Clean the surface of the amplifier with a soft, slightly damp cloth. Wipe gently with a soft cloth dampened with water or a mild detergent solution. Please avoid the use of harsh detergents (i.e. product containing sodium carbonate).

## 9. Technical Parameters

**Frequency Response:** 0-50kHz ( $\pm 0.1$ dB) ,0-150kHz ( $\pm 1$ dB), 0-300kHz ( $\pm 3$ dB)

**THDN:** 0.002% (-80dB)

**S/N Ratio:** >98dB, >100dB (A-Weighted)

**Channel Separation:** >106dB

**Input Sensitivity:** 2.25Vrms - 3.6Vrms

**Input Impedance:** 50k $\Omega$

**Input Connector:** RCA x 4, XLR x 4, HT Bypass x 1

**Output Voltage:** 2.25Vrms - 3.6Vrms

**Maximum Output Voltage :** 16Vrms

**Output Impedance:** 75 $\Omega$

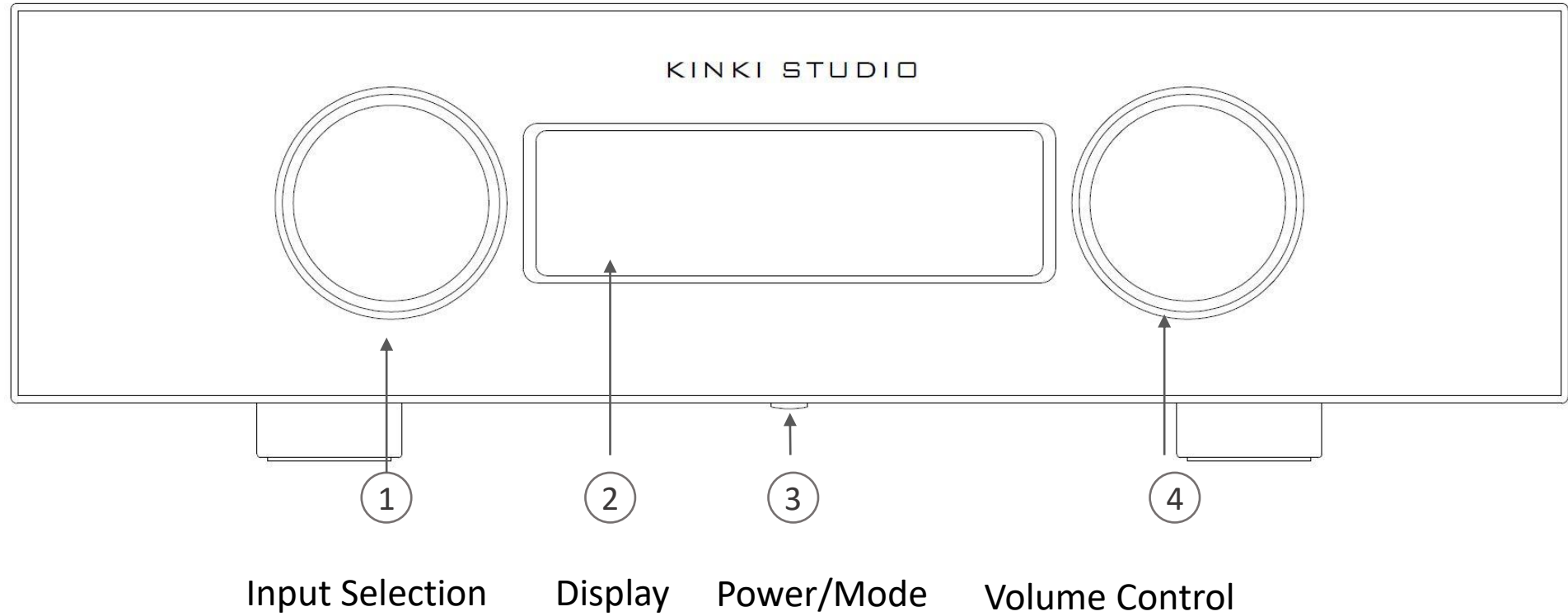
**Output Connector:** RCA x 1, XLR x 1

**Power Consumption:** 80W Max Output

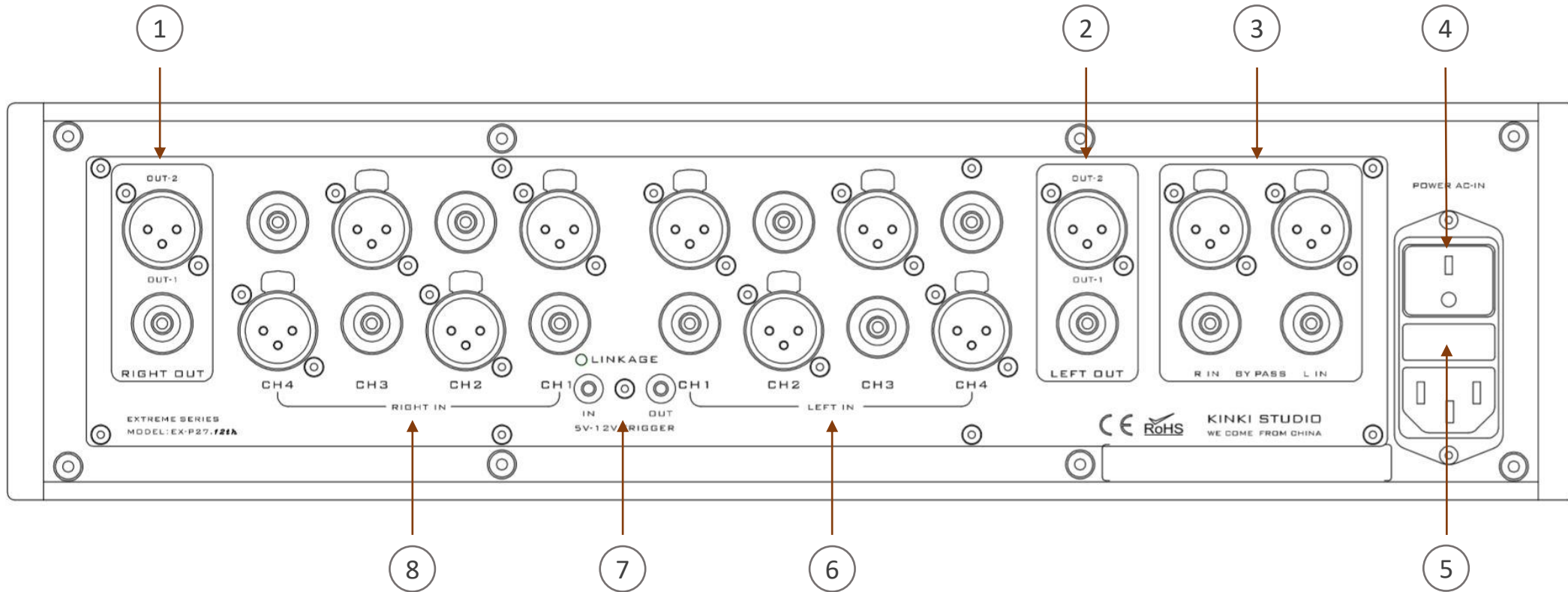
**Dimension:** 430W x 120H x 330D

**Weight:** 15KG





## Front Panel



① Preout 1/2 (Right)

② Preout 1/2 (Left)

③ HT Bypass Signal Input

④ On/Off Switch

⑤ Fuse Holder  
(2A 5x20mm)

⑥ Input Signal Channel 1-4 (Left)

⑦ 12V Trigger

⑧ Input Signal Channel 1-4 (Right)

## Rear Panel

**KINKI STUDIO**